

# Botanical Brunch

A FUNDRAISING EVENT



MAY 3, 2026

**LA KRETZ GARDEN  
PAVILION (UCLA)**

WESTWOOD, CA

**SPONSORSHIP OPPORTUNITIES**

# ABOUT ALCOTT

## OUR MISSION

To improve the mental health of underserved individuals through integrated social care.

## OUR SERVICES

Our services focus on housing and mental health support of varying needs for our community in Los Angeles. Some of these services include:

- **Mental Health**

- Psychosocial Assessment
- Individual & group therapy
- Psychiatry
- Case management
- Unarmed Crisis Response
- Wraparound support

- **Housing**

- Housing navigation
- Interim Housing (24/7 trauma-informed supported)
- Nursing & medication management
- Reentry services
- Peer support
- Life skills classes



# PAST EVENTS

We've hosted a wide range of fundraising events in our history. From gallery shows and pottery classes to food tastings, we know how to put on a fun event you won't want to miss out on!



Yelp Pop-Up (2024)



Ceramic and Sip (2022)



Artful Awakening (2023)



Screenland 5K (Annual)



Impact of Color (2024)

# BOTANICAL BRUNCH

This year, our annual fundraising event takes the form of a brunch. Enjoy mimosas and breakfast bites while hearing about the impact of our work. Together we can offer our programs to even more people in LA.

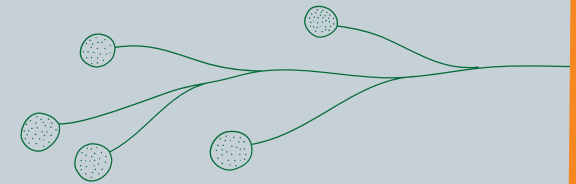
## **WHEN?**

May 3, 2026 at 11:00 AM to 1:30 PM

*VIP toast with President & CEO, Nick Maiorino, at 10:30 AM*

## **WHERE?**

UCLA La Kretz Garden Pavilion, just steps from the UCLA Mathias Botanical Garden

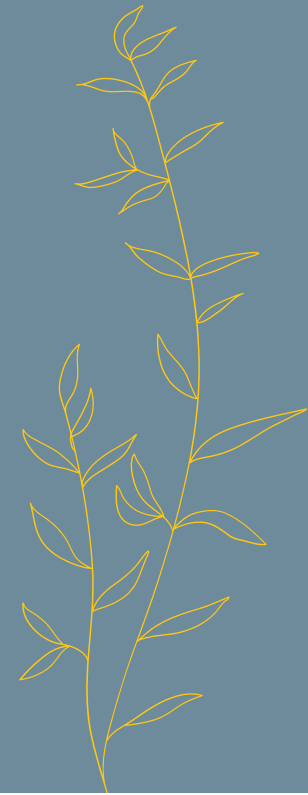


# ABOUT SPONSORSHIPS

## SPONSORSHIP FEATURES

- Recognition as an active social impact contributor in the community
- In-person and virtual brand engagement and visibility
- Complementary tickets
- All contributions are fully tax-deductible

## SOME OF OUR PAST SPONSORS INCLUDE...



# SPONSORSHIP PACKAGES

	PLATINUM \$10,000	GOLD \$5,000	SILVER \$2,500	BRONZE \$1,000	COMMUNITY \$500
501 C3 Tax Benefit	X	X	X	X	X
Thank You Letter	X	X	X	X	X
Complementary tickets (number depends on package)	X	X	X	X	X
Inclusion in our "What to do in Westwood today" handout	X	X	X	X	X
Placement on our event webpage	X	X	X	X	
Social media shoutout (stories)	X	X	X	X	
Mention in Alcott quarterly newsletter	X	X	X	X	
Logos feature on digital screens in event space	X	X	X	X	
Social media shoutout (permanent grid post)	X	X	X		
Logo placement on invites*	X	X	X		
Logo placement on signage and other print materials*	X	X	X		
Mention in event speech	X	X			
Logo placement in our annual report	X	X			
Naming rights to the VIP pre-brunch toast	X				
Short video integrated into event	X				

\*if confirmed before materials are sent to print

In-kind donations will be accepted in lieu of monetary donations on a case-by-case basis. Please reach out to [kgiraldes@alcottcenter.org](mailto:kgiraldes@alcottcenter.org) for more information.

# WE HOPE YOU'LL JOIN US!

## CONTACT

Please reach out to Krystal, Alcott's Donor Relations Coordinator, if you have any questions, want to request a custom sponsorship package, or to sign up for an existing package. Let's work together to improve the lives of underserved individuals through integrated social care!

**CONTACT (323) 561-0541 OR  
KGIRALDES@ALCOTTCENTER.ORG**

*We can't wait to hear from you!*

